

Kincade Fire Evacuation Orders



Date	Time	Mandatory Evacuation Zones	Evacuation Warning Zones	Open Zones
October 23, 2019	11:34 PM	Community of Geyserville (Census Designated Area) Population: 874	N/A	N/A
October 26, 2019	10:00 AM	Zones: 1, 2, 3 Population: 44,131	Zones: 4, 5 Population: 14,459	N/A
October 26, 2019	6:30 PM	Zones: 1, 2, 3, 4, 5, 7 Population: 83,764	Zones: 6, 8 Population: 41,668	N/A
October 27, 2019	4:30 AM	Zones: 1, 2, 3, 4, 5, 6, 7, 8, 9, 10 Population: 186,651	N/A	N/A
October 27, 2019	12:45 PM	Zones: 1, 2, 3, 4, 5, 6, 7, 8, 9, 10 Population: 186,651	Zone: 21 Population: 6,256	N/A
October 28, 2019	2:00 PM	Zones: 1, 2, 3, 4, 5, 6, 8A, 9, 10 Population: 136,148	Zones: 7, 8B, 21 Population: 56,804	N/A
October 28, 2019	6:00 PM	Zones: 1, 2, 3, 4, 5, 6, 8A, 9, 10 Population: 136,148	Zones: 7, 8B, 21, 31 Population: 58,681	N/A
October 29, 2019	2:00 PM	Zones: 1, 2, 3, 4B, 5, 6, 8A, 9, 10 Population: 133,740	Zones: 4A, 7, 8B, 21, 31, 32, 33, 34 Population: 65,046	N/A

Kincade Fire Evacuation Orders



Date	Time	Mandatory Evacuation Zones	Evacuation Warning Zones	Open Zones
October 30, 2019	1:00 PM	Zones: 1B, 2, 3C, 5B Population: 3,381	Zones: 1A, 3A, 3B, 5A, 6 (original revised to remove City of Santa Rosa), 21, 31, 32, 33, 34 Population: 64,860	Zones: 4A, 4B, 7, 8A, 8B, 9, 10, Unnamed (portion of original Zone 6 that was within the City of Santa Rosa) Population: 130,544
October 31, 2019	2:00 PM	Zones: 1B, 2, 3C, 5B Population: 3,381	Zones: 1A, 3A, 3B, 5A, 6 (original revised to remove City of Santa Rosa) Population: 52,770	Zones: 4A, 4B, 7, 8A, 8B, 9, 10, 21, 31, 32, 33, 34, Unnamed (portion of original Zone 6 that was within the City of Santa Rosa) Population: 142,634
November 1, 2019	1:00 PM	Zones: 1B (original reduced to remove a portion of Dry Creek Rancheria), 2, 3C, 5B Population: 3,376	N/A	Zones: 1A (original expanded into 1B to include a portion of Dry Creek Rancheria), 3A, 3B, 4A, 4B, 5A, 6 (original revised to remove City of Santa Rosa), 7, 8A, 8B, 9, 10, 21, 31, 32, 33, 34, Unnamed (portion of original Zone 6 that was within the City of Santa Rosa) Population: 195,409

Kincade Fire Evacuation Orders



Date	Time	Mandatory Evacuation Zones	Evacuation Warning Zones	Open Zones
November 1, 2019	3:00 PM	Zones: 1C, 2, 3C, 5B Population: 2,608	Zone: 1B (original reduced to remove a portion of Dry Creek Rancheria; further reduced to remove new Zone 1C) Population: 768	Zones: 1A (original expanded into 1B to include a portion of Dry Creek Rancheria), 3A, 3B, 4A, 4B, 5A, 6 (original revised to remove City of Santa Rosa), 7, 8A, 8B, 9, 10, 21, 31, 32, 33, 34, Unnamed (portion of original Zone 6 that was within the City of Santa Rosa) Population: 195,409
November 2, 2019	3:00 PM	Zones: 1C (original reduced to remove new Zone 1D), 2, 3C (original reduced to remove new Zone 3D), 5B (original reduced to remove new Zone 5C) Population: 978	Zones: 1D, 3D Population: 1,324	Zones: 1A (original expanded into 1B to include a portion of Dry Creek Rancheria), 1B (original reduced to remove a portion of Dry Creek Rancheria; further reduced to remove new Zone 1C), 3A, 3B, 4A, 4B, 5A, 5C, 6 (revised to remove City of Santa Rosa), 7, 8A, 8B, 9, 10, 21, 31, 32, 33, 34, Unnamed (portion of original Zone 6 that was within the City of Santa Rosa) Population: 196,483

Kincade Fire Evacuation Orders



Date	Time	Mandatory Evacuation Zones	Evacuation Warning Zones	Open Zones
November 3, 2019	3:00 PM	N/A	<p>Zones: 1C (original reduced to remove new Zone 1D), 2, 3C (original reduced to remove new Zone 3D), 5B (original reduced to remove new Zone 5C)</p> <p>Population: 978</p>	<p>Zones: 1A (original expanded into 1B to include a portion of Dry Creek Rancheria), 1B (original reduced to remove a portion of Dry Creek Rancheria; further reduced to remove new Zone 1C), 1D, 3A, 3B, 3D, 4A, 4B, 5A, 5C, 6 (revised to remove City of Santa Rosa), 7, 8A, 8B, 9, 10, 21, 31, 32, 33, 34, Unnamed (portion of original Zone 6 that was within the City of Santa Rosa)</p> <p>Population: 197,807</p>

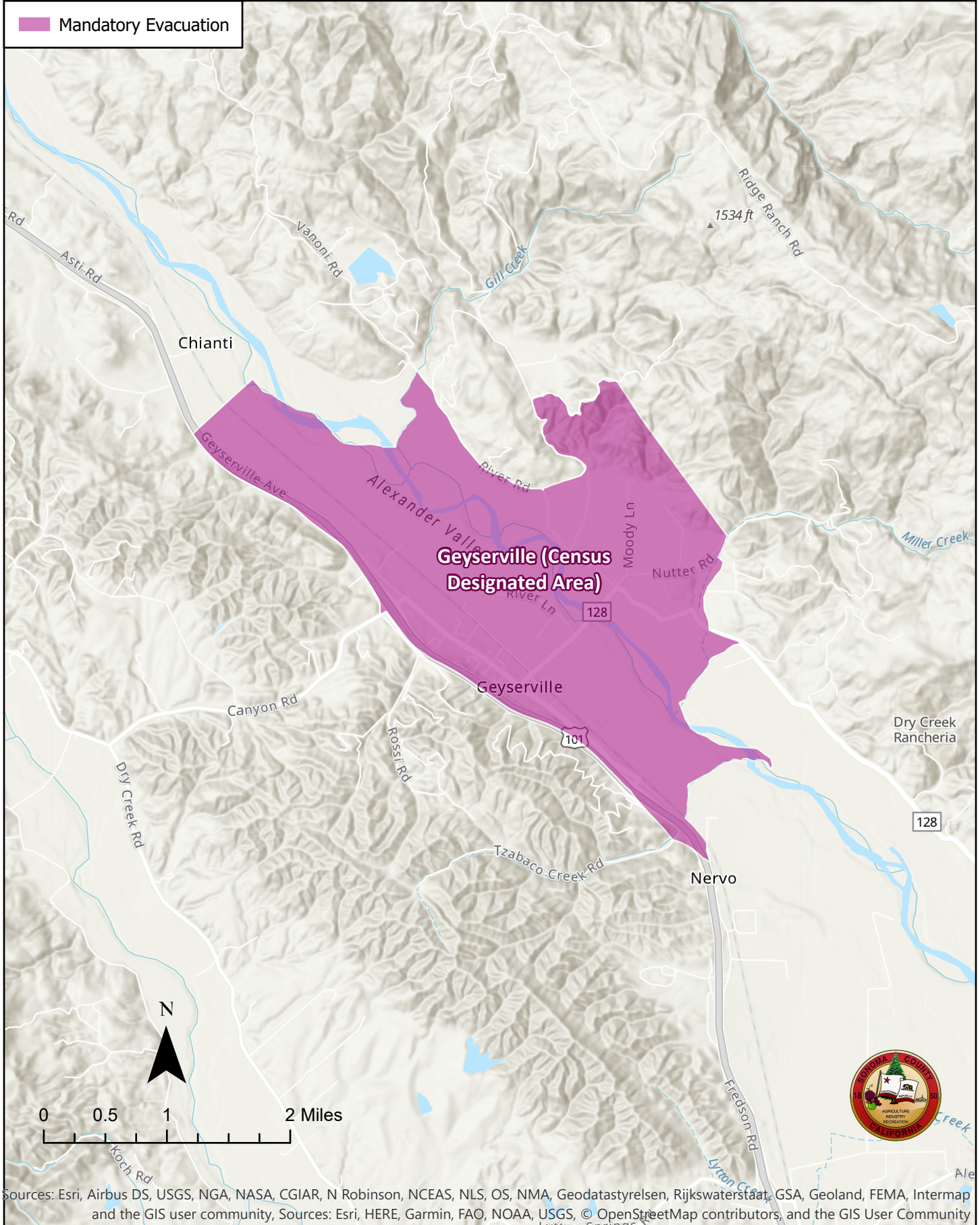
Kincade Fire Evacuation Orders



Date	Time	Mandatory Evacuation Zones	Evacuation Warning Zones	Open Zones
November 4, 2019	3:00 PM	N/A	N/A	<p>Zones: 1A (original expanded into 1B to include a portion of Dry Creek Rancheria), 1B (original reduced to remove a portion of Dry Creek Rancheria; further reduced to remove new Zone 1C), 1C (original reduced to remove new Zone 1D), 1D, 2, 3A, 3B, 3C (original reduced to remove new Zone 3D), 3D, 4A, 4B, 5A, 5B (original reduced to remove new Zone 5C), 5C, 6 (revised to remove City of Santa Rosa), 7, 8A, 8B, 9, 10, 21, 31, 32, 33, 34, Unnamed (portion of original Zone 6 that was within the City of Santa Rosa)</p> <p>Population: 198,785</p>

Kincadee Fire Evacuation Order as of October 23, 2019 at 11:34 PM

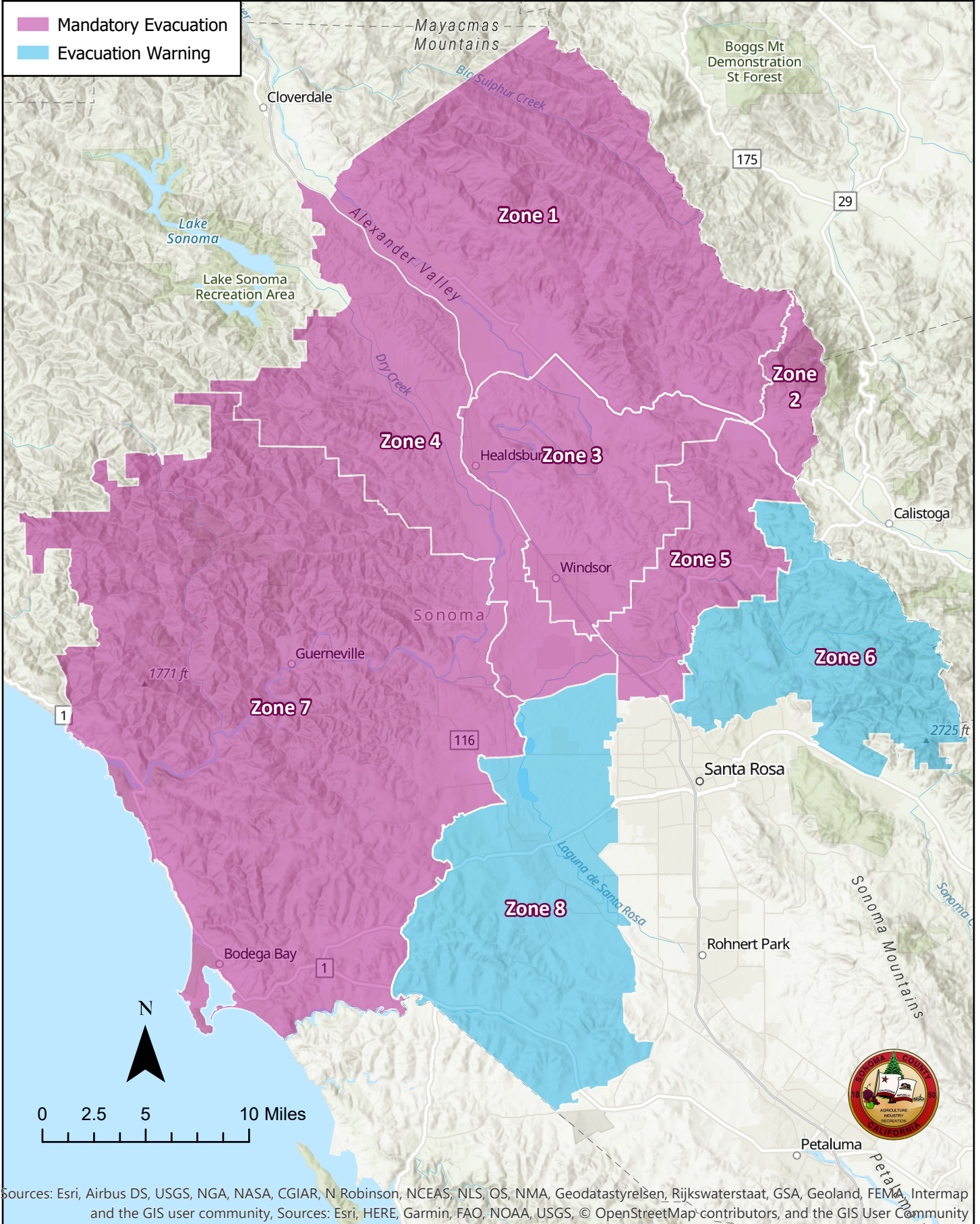
 Mandatory Evacuation



Sources: Esri, Airbus DS, USGS, NGA, NASA, CGIAR, N Robinson, NCEAS, NLS, OS, NMA, Geodatastyrelsen, Rijkswaterstaat, GSA, Geoland, FEMA, Intermap and the GIS user community, Sources: Esri, HERE, Garmin, FAO, NOAA, USGS, © OpenStreetMap contributors, and the GIS User Community

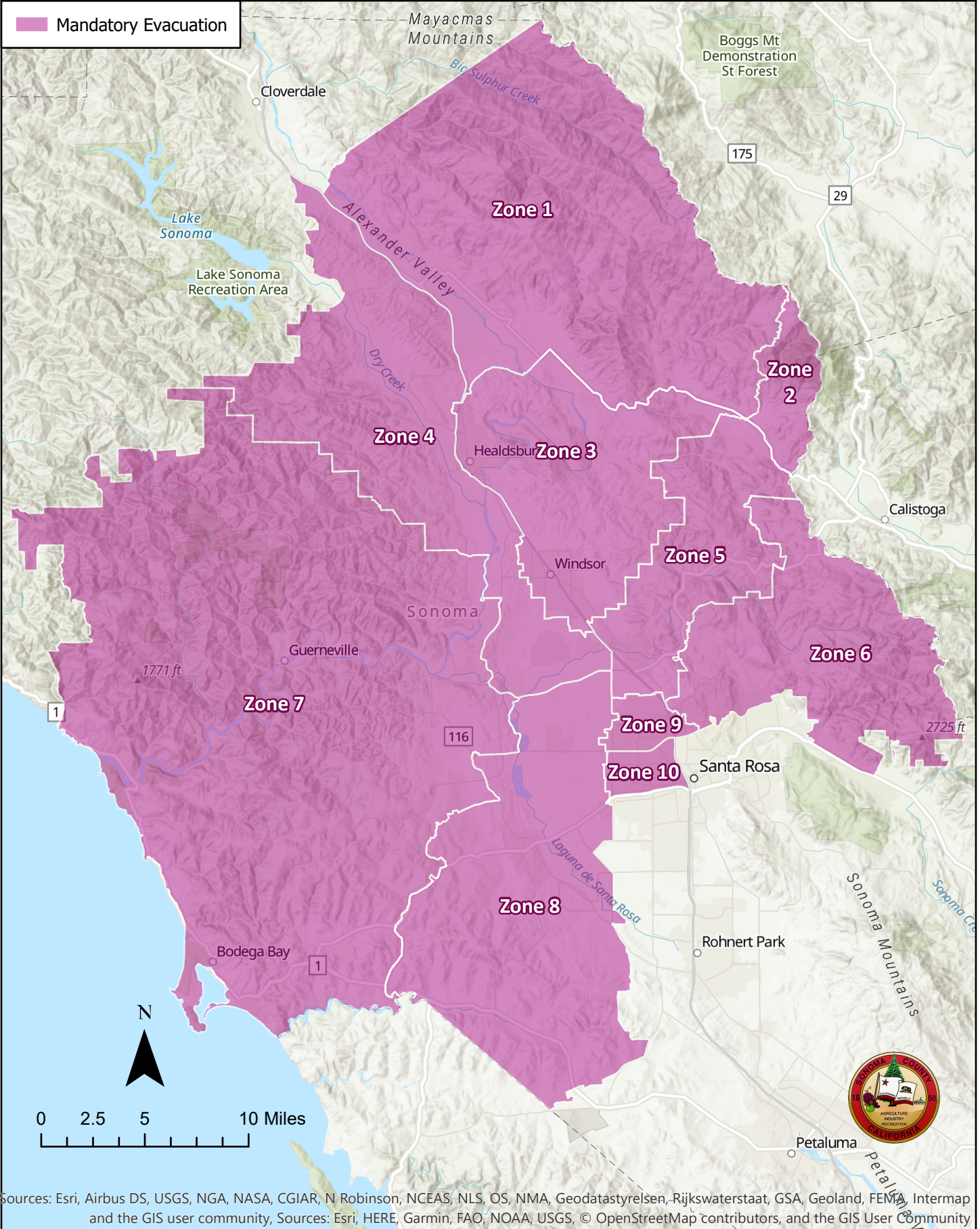
Kincade Fire Evacuation Orders as of October 26, 2019 at 6:30 PM

- Mandatory Evacuation
- Evacuation Warning



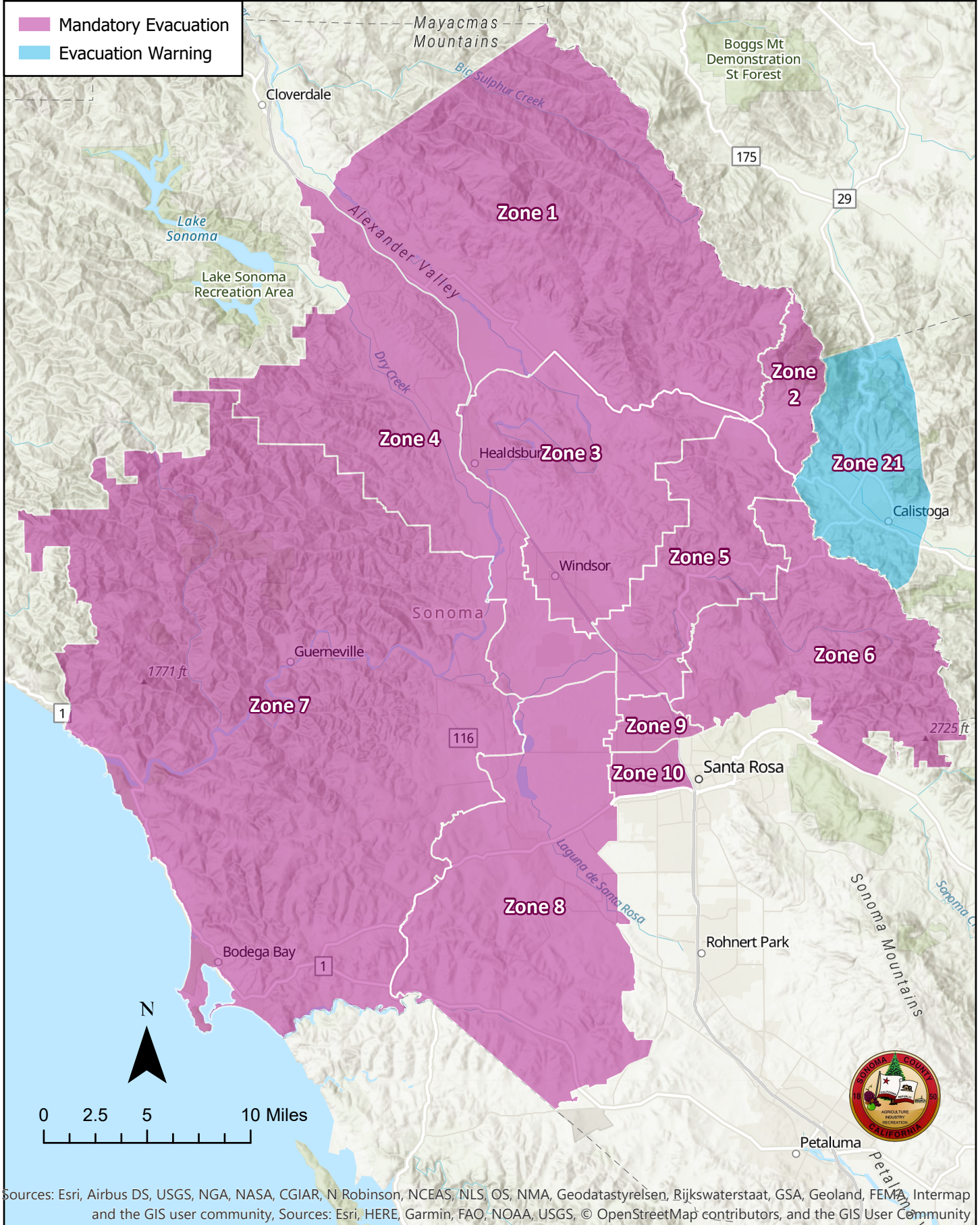
Sources: Esri, Airbus DS, USGS, NGA, NASA, CGIAR, N Robinson, NCEAS, NLS, OS, NMA, Geodatastyrelsen, Rijkswaterstaat, GSA, Geoland, FEMA, Intermap and the GIS user community, Sources: Esri, HERE, Garmin, FAO, NOAA, USGS, © OpenStreetMap contributors, and the GIS User Community

Kincadee Fire Evacuation Orders as of October 27, 2019 at 4:30 AM

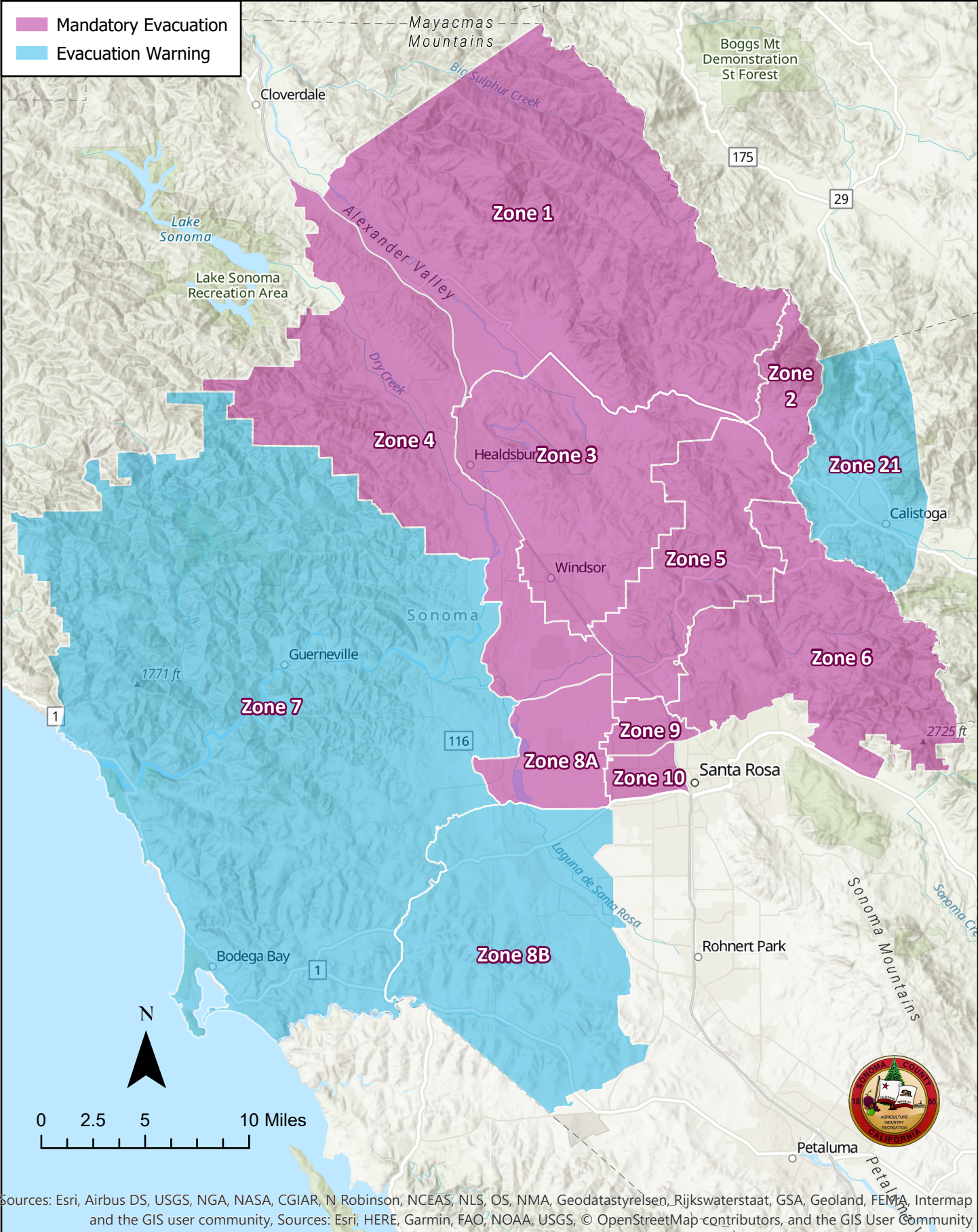


Sources: Esri, Airbus DS, USGS, NGA, NASA, CGIAR, N Robinson, NCEAS, NLS, OS, NMA, Geodatastyrelsen, Rijkswaterstaat, GSA, Geoland, FEMA, Intermap and the GIS user community, Sources: Esri, HERE, Garmin, FAO, NOAA, USGS, © OpenStreetMap contributors, and the GIS User Community

Kincadee Fire Evacuation Orders as of October 27, 2019 at 12:45 PM





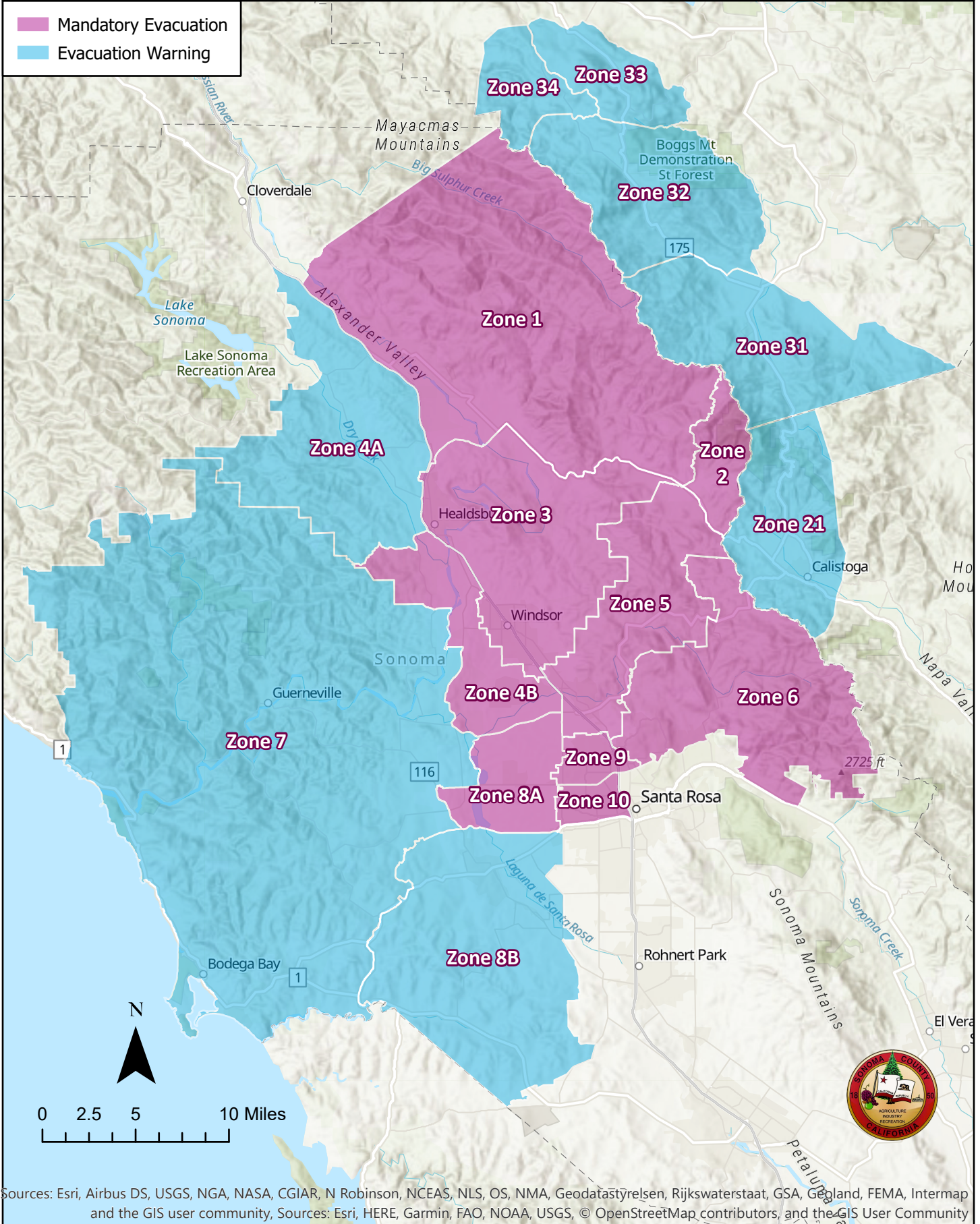
Kincade Fire Evacuation Orders as of October 28, 2019 at 2:00 PM



Sources: Esri, Airbus DS, USGS, NGA, NASA, CGIAR, N Robinson, NCEAS, NLS, OS, NMA, Geodatastyrelsen, Rijkswaterstaat, GSA, Geoland, FEMA, Intermap and the GIS user community, Sources: Esri, HERE, Garmin, FAO, NOAA, USGS, © OpenStreetMap contributors, and the GIS User Community

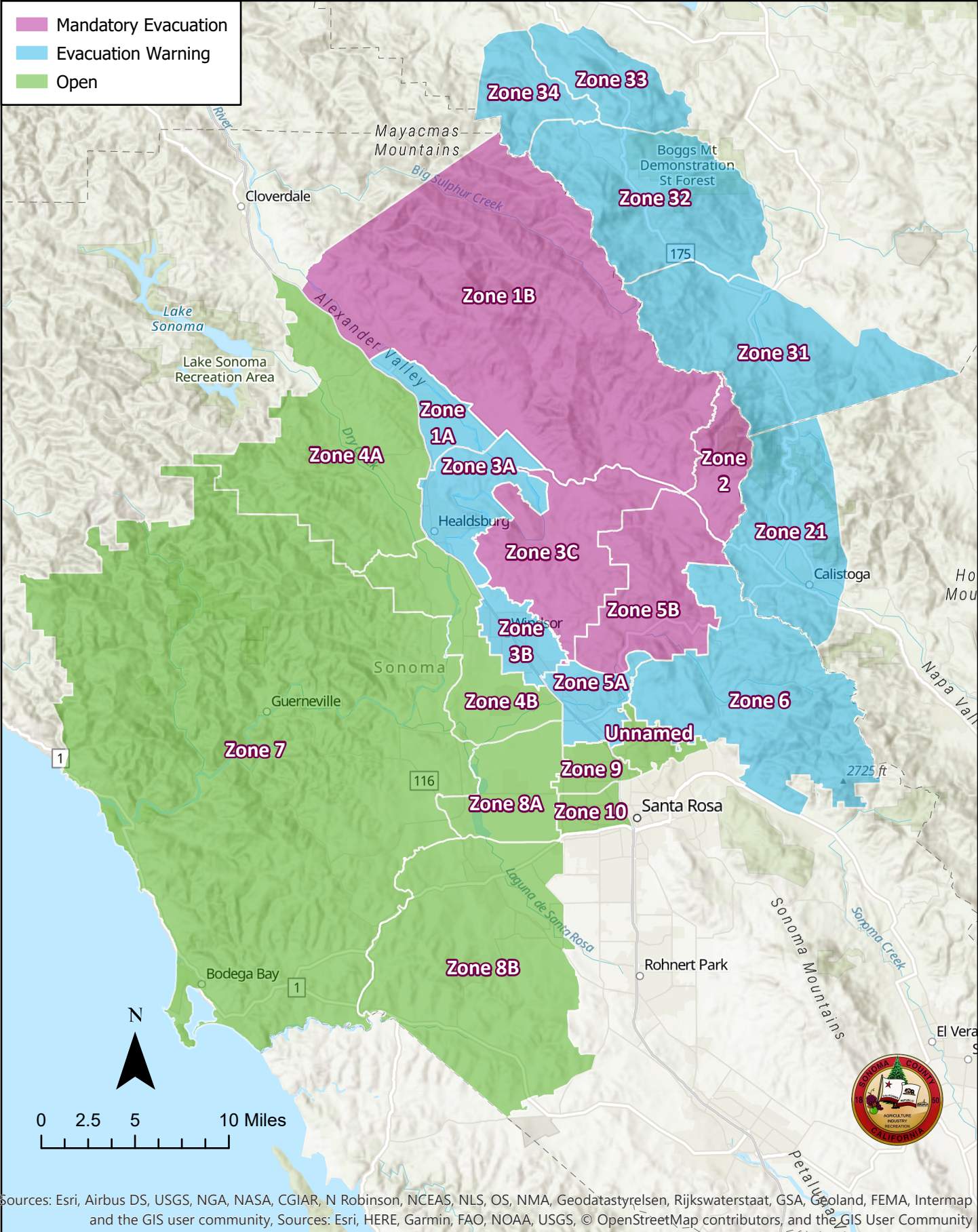
Kincade Fire Evacuation Orders as of October 29, 2019 at 2:00 PM

-  Mandatory Evacuation
-  Evacuation Warning



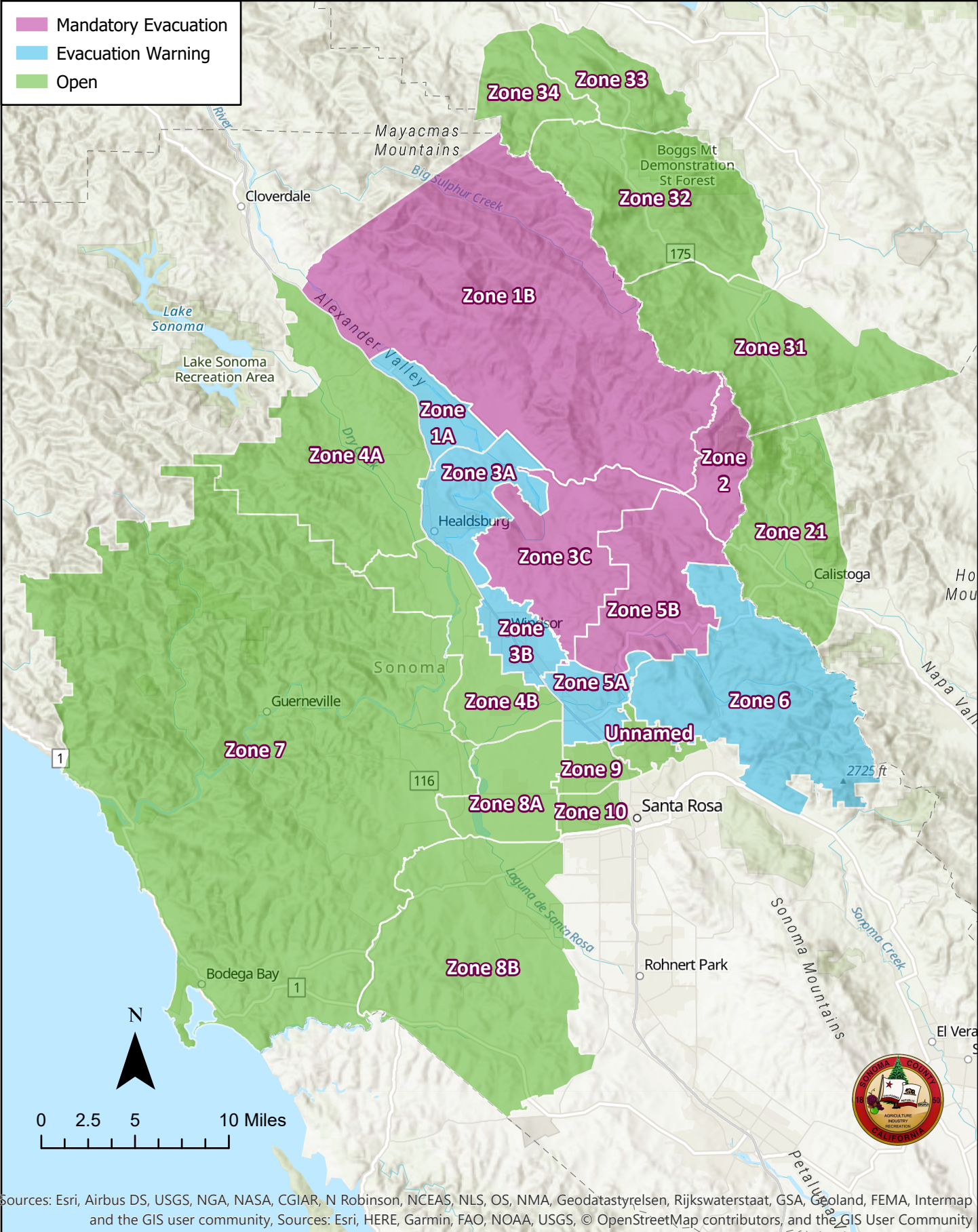
Sources: Esri, Airbus DS, USGS, NGA, NASA, CGIAR, N Robinson, NCEAS, NLS, OS, NMA, Geodatastyrelsen, Rijkswaterstaat, GSA, Geoland, FEMA, Intermap and the GIS user community, Sources: Esri, HERE, Garmin, FAO, NOAA, USGS, © OpenStreetMap contributors, and the GIS User Community

Kincade Fire Evacuation Orders as of October 30, 2019 at 1:00 PM




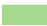
Sources: Esri, Airbus DS, USGS, NGA, NASA, CGIAR, N Robinson, NCEAS, NLS, OS, NMA, Geodastystyrelsen, Rijkswaterstaat, GSA, Goland, FEMA, Intermap and the GIS user community, Sources: Esri, HERE, Garmin, FAO, NOAA, USGS, © OpenStreetMap contributors, and the GIS User Community

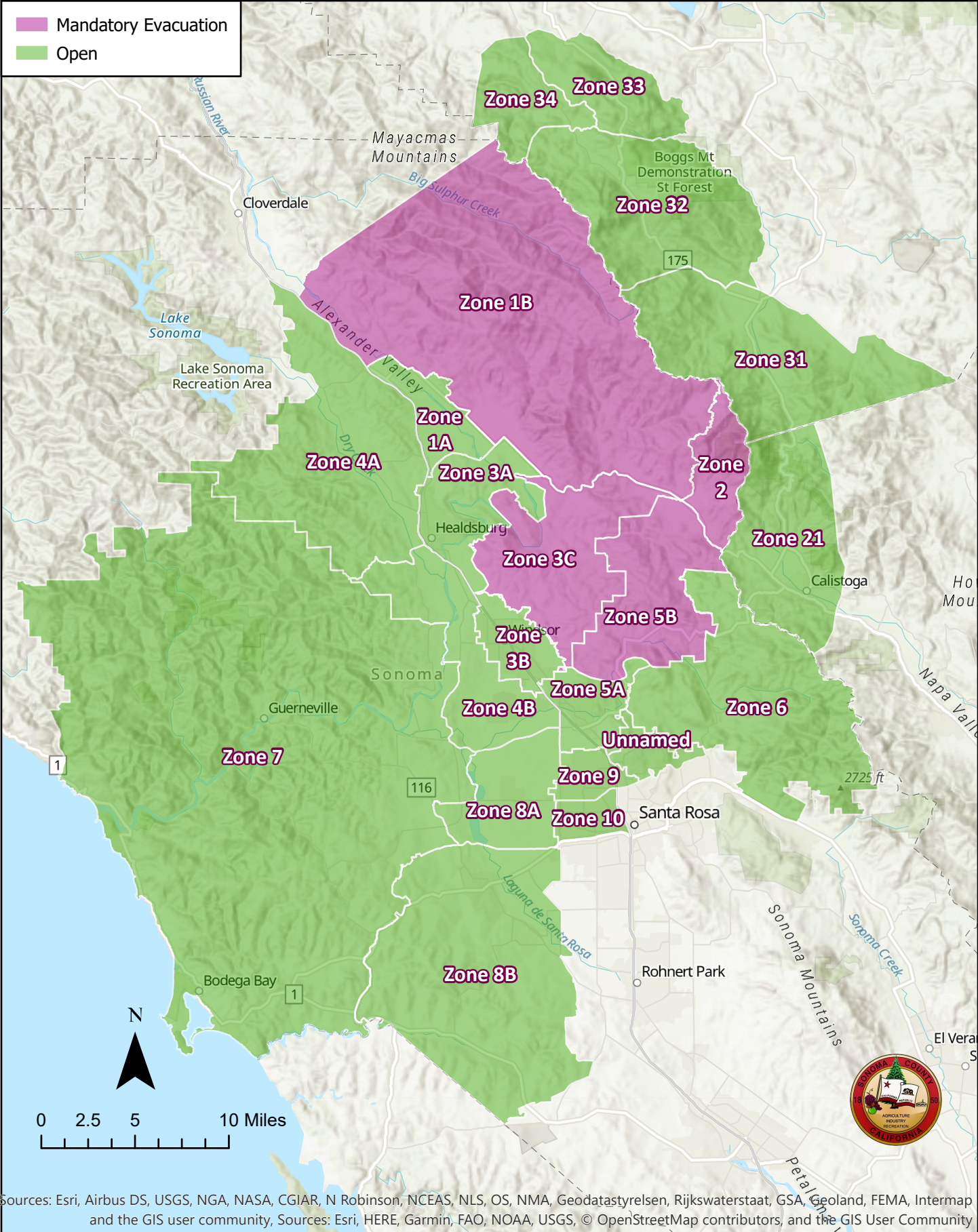
Kincade Fire Evacuation Orders as of October 31, 2019 at 2:00 PM



Sources: Esri, Airbus DS, USGS, NGA, NASA, CGIAR, N Robinson, NCEAS, NLS, OS, NMA, Geodatasstyrelsen, Rijkswaterstaat, GSA, Goland, FEMA, Intermap and the GIS user community, Sources: Esri, HERE, Garmin, FAO, NOAA, USGS, © OpenStreetMap contributors, and the GIS User Community




Kincadee Fire Evacuation Orders as of November 1, 2019 at 1:00 PM

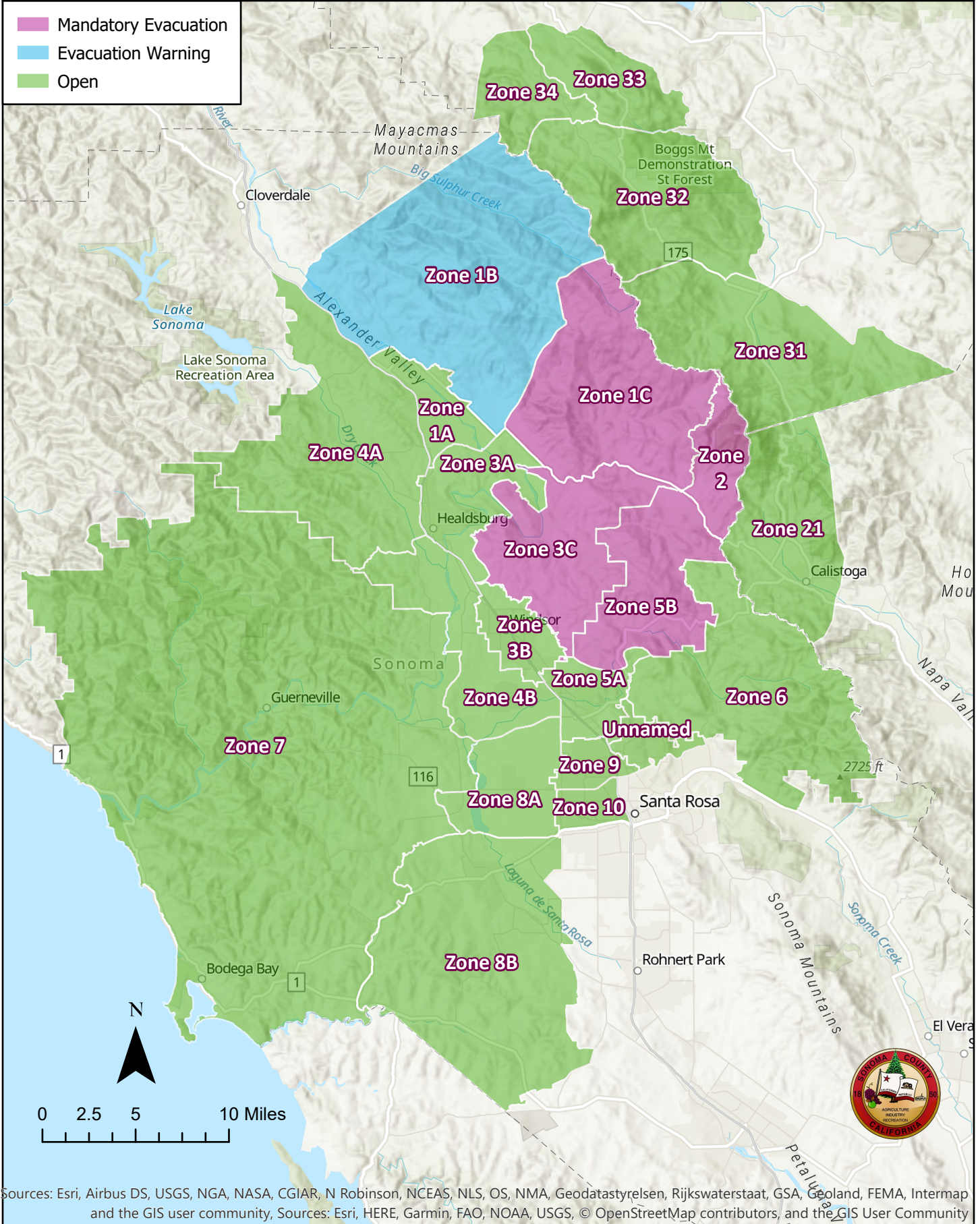
 Mandatory Evacuation
 Open



Sources: Esri, Airbus DS, USGS, NGA, NASA, CGIAR, N Robinson, NCEAS, NLS, OS, NMA, Geodastystrelsen, Rijkswaterstaat, GSA, Geoland, FEMA, Intermap and the GIS user community, Sources: Esri, HERE, Garmin, FAO, NOAA, USGS, © OpenStreetMap contributors, and the GIS User Community

Kincadee Fire Evacuation Orders as of November 1, 2019 at 3:00 PM

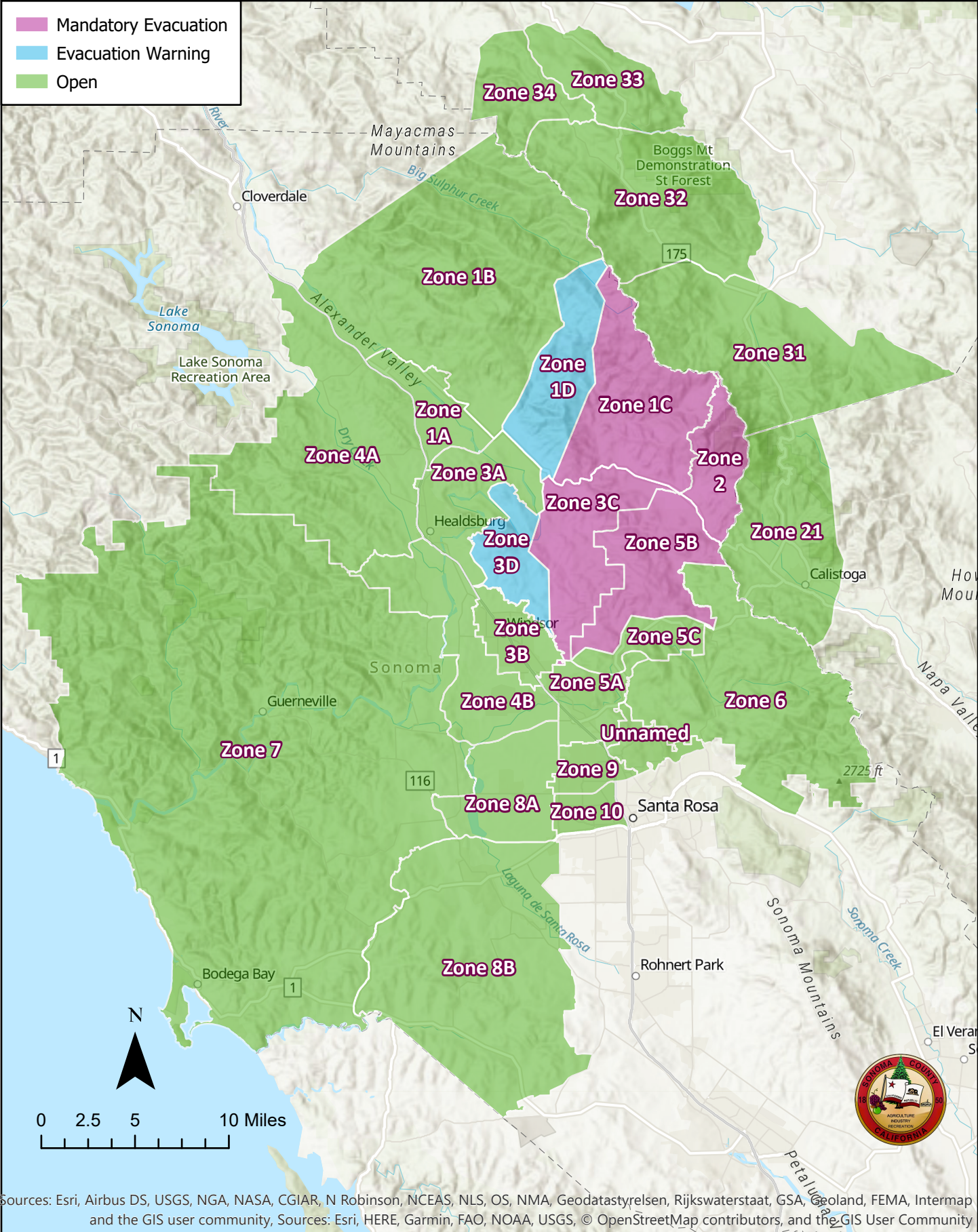
-  Mandatory Evacuation
-  Evacuation Warning
-  Open



Sources: Esri, Airbus DS, USGS, NGA, NASA, CGIAR, N Robinson, NCEAS, NLS, OS, NMA, Geodatasstyrelsen, Rijkswaterstaat, GSA, Goland, FEMA, Intermap and the GIS user community, Sources: Esri, HERE, Garmin, FAO, NOAA, USGS, © OpenStreetMap contributors, and the GIS User Community

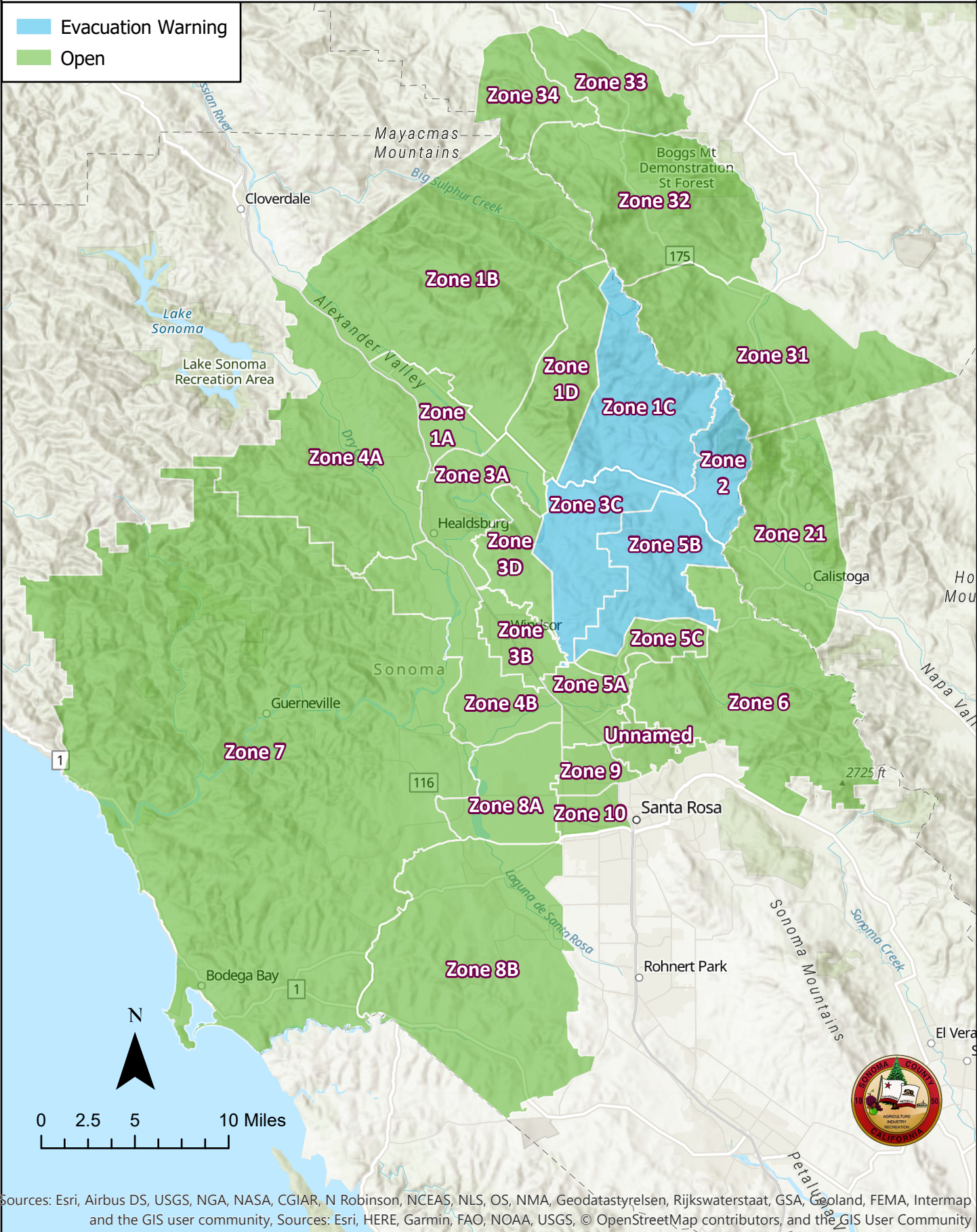
Kincade Fire Evacuation Orders as of November 2, 2019 at 3:00 PM

- Mandatory Evacuation
- Evacuation Warning
- Open

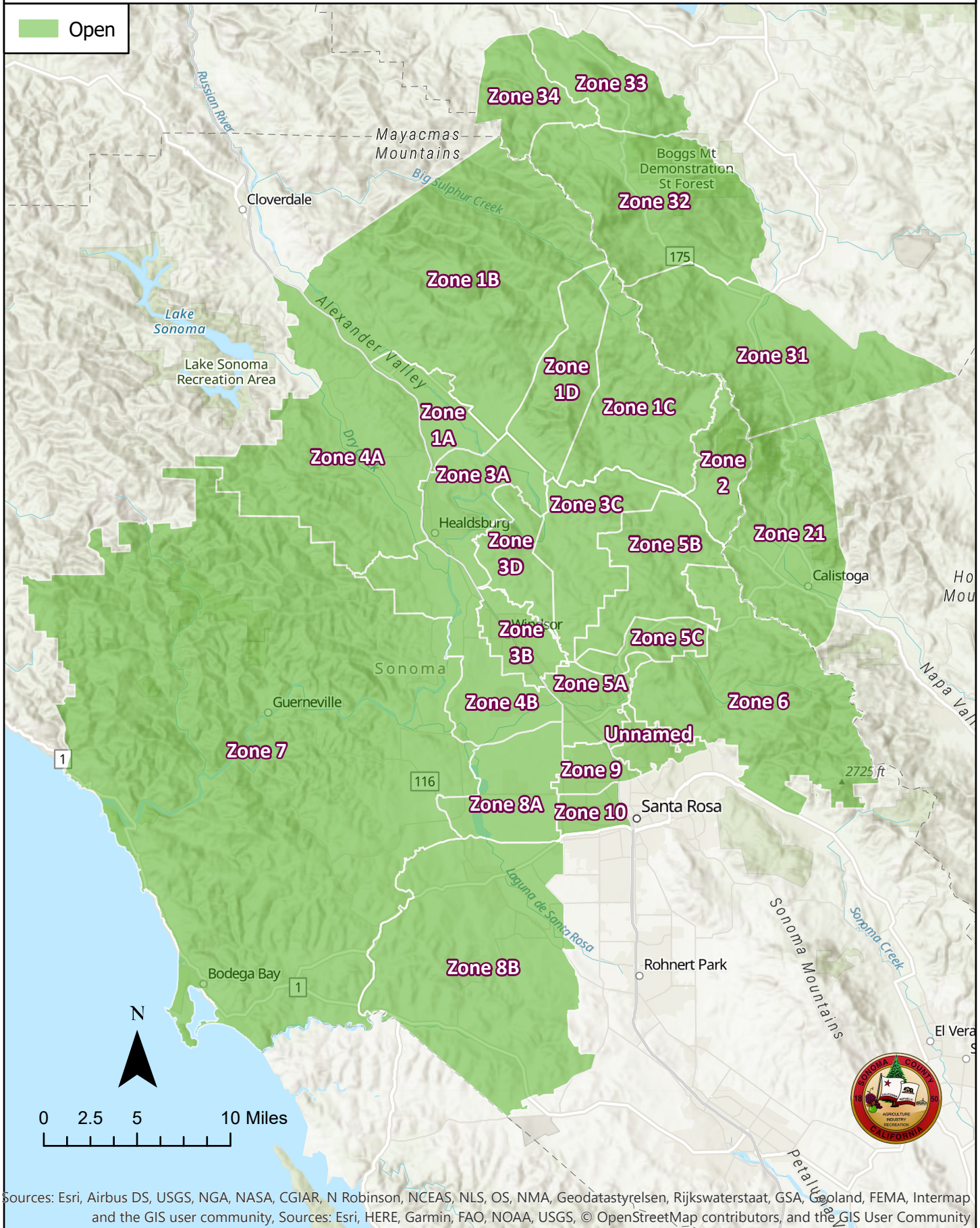


Sources: Esri, Airbus DS, USGS, NGA, NASA, CGIAR, N Robinson, NCEAS, NLS, OS, NMA, Geodatasystemen, Rijkswaterstaat, GSA, Goland, FEMA, Intermap and the GIS user community, Sources: Esri, HERE, Garmin, FAO, NOAA, USGS, © OpenStreetMap contributors, and the GIS User Community

Kincadee Fire Evacuation Orders as of November 3, 2019 at 3:00 PM



Kincadee Fire Evacuation Orders as of November 4, 2019 at 3:00 PM



Sources: Esri, Airbus DS, USGS, NGA, NASA, CGIAR, N Robinson, NCEAS, NLS, OS, NMA, Geodatasystemen, Rijkswaterstaat, GSA, Geoland, FEMA, Intermap and the GIS user community, Sources: Esri, HERE, Garmin, FAO, NOAA, USGS, © OpenStreetMap contributors, and the GIS User Community